

Symbiota

What is Symbiota?

Symbiota is an open-source content management solution and data aggregator designed to capture, manage, and mobilize occurrence and observation data to facilitate biodiversity research.



Biodiversity Knowledge Integration Center

Arizona State University



UNIVERSITY of FLORIDA

CAL POLY SAN LUIS OBISPO



At-A-Glance

Help Desk

TCN Support

Portal Campaigns

Image Hosting & Publishing

IT Infrastructure Support

Expand Portal Communities

Documentation & Training Resources

Documentation & Training Resources

Publisher Endorsement

Help Desk

Proposal Consultation

Why Symbiota?

Data Aggregation within a Theme

Through a mixture of datasets managed directly in the portals ("live collections") and copies of data from other sources ("snapshots"), Symbiota portals share data according to a particular taxonomic and/or geographic scope.

Integrated Content Management System

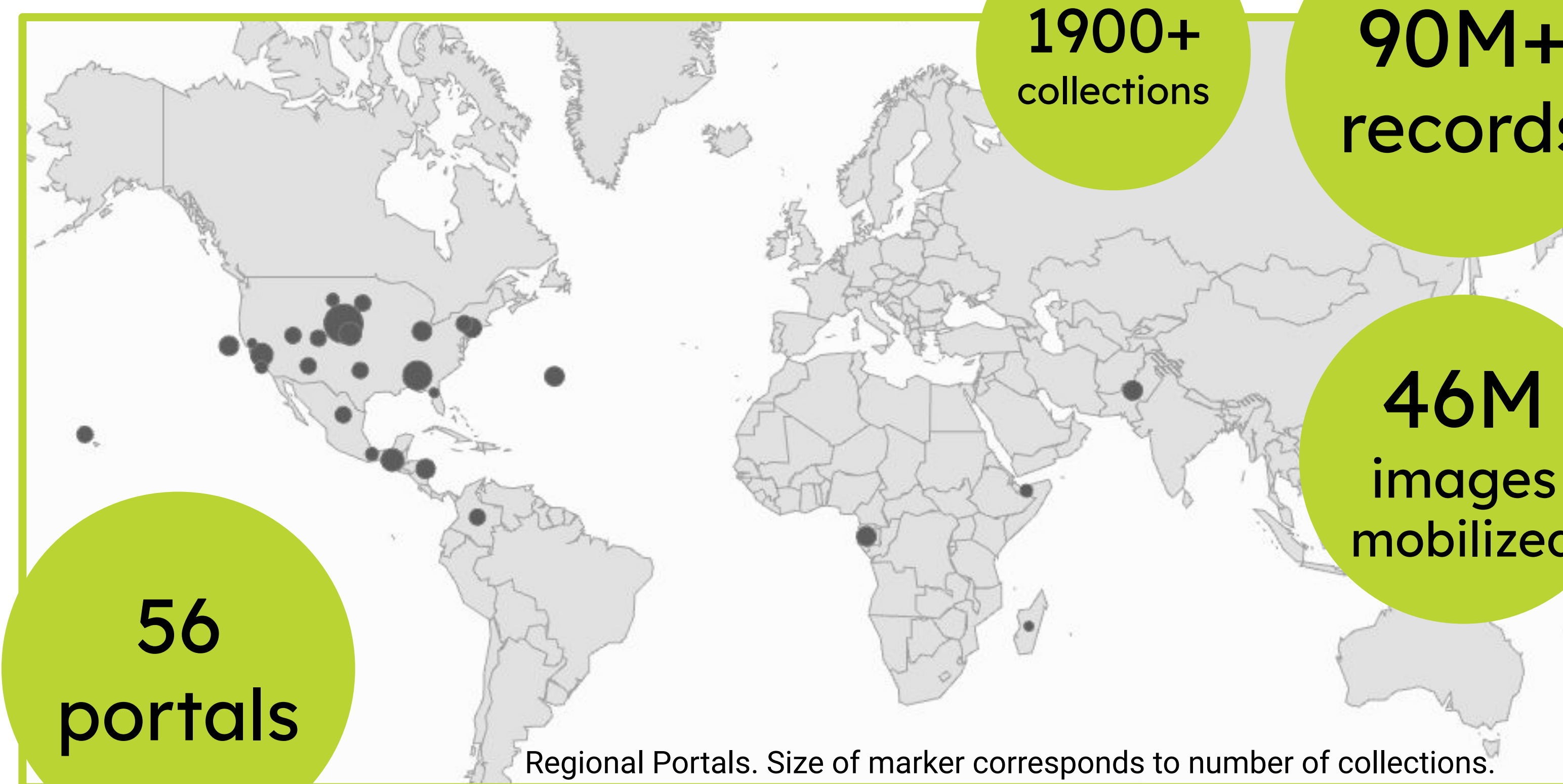
"Live collections" use the portal as their primary database, managing data collaboratively via a browser-based, password-protected user interface.

Coalesced User Communities

Themed portals engage a particular community, which improves participation and commitment, data quality, data use, and portal sustainability.

Commitment to FAIR Data Principles

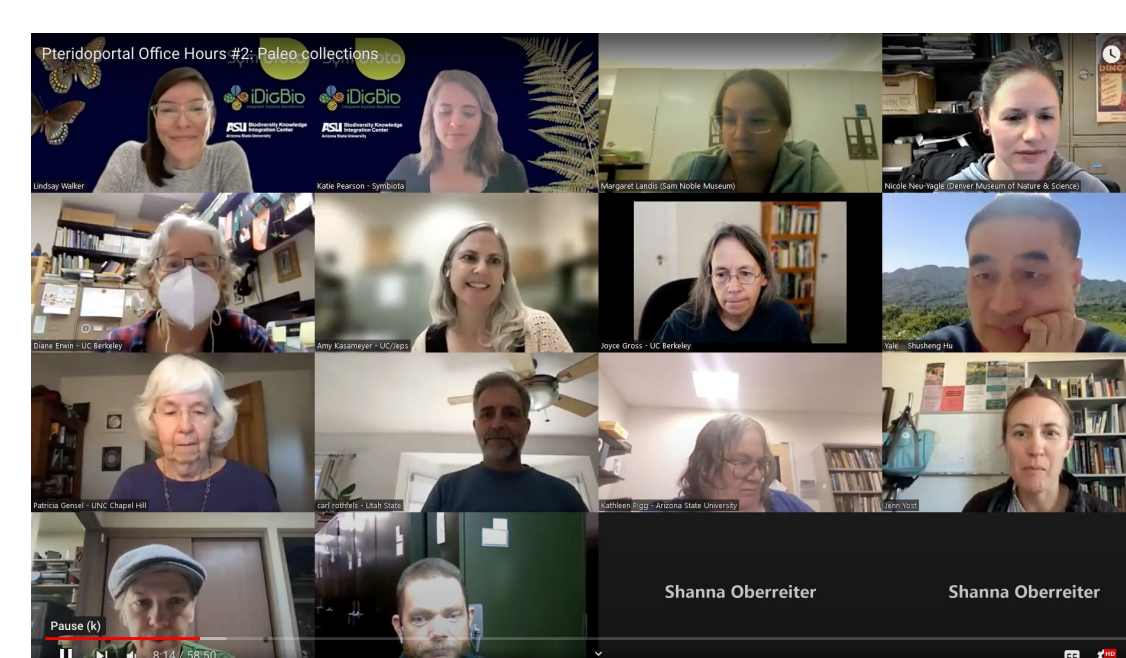
Data in Symbiota portals are publicly findable, accessible, interoperable (aligned with Darwin Core standards), and reusable. Importing and exporting data from Symbiota portals is quick and easy.



Connecting

Collections & Communities

Each Symbiota portal represents a community of data contributors and users, and most portals have a specific regional or taxonomic theme. The Symbiota code has been used to create 56+ portal communities.



Contact our Help Desk to get started:

help@symbiota.org



symbiota.org



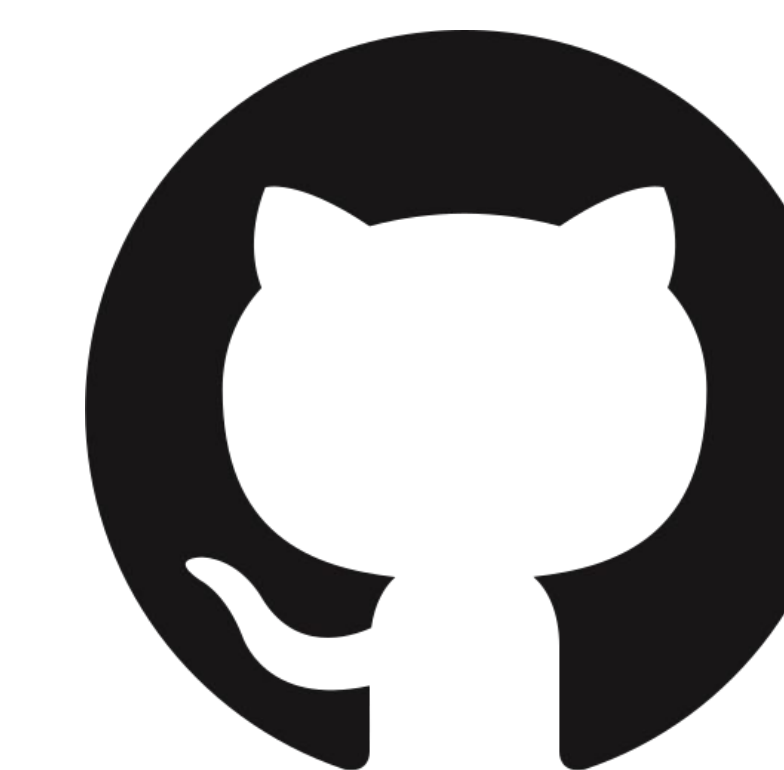
iDigBio and the Symbiota Support Hub are made possible by National Science Foundation Award # 2027654. Any opinions, findings, and conclusions or recommendations expressed in this material are those of the authors and do not necessarily reflect the views of the National Science Foundation.

Symbiota Support Hub



Symbiota users are supported by the Symbiota Support Hub. Our team is dedicated to providing technical and community capacity-building support for all ASU-hosted Symbiota portals, and for TCNs with portals funded prior to 2020.

Help Develop Symbiota



Check out the code: github.com/BioKIC/Symbiota

Improvements to one Symbiota portal can have broad impacts. When the central code is updated for one portal, many portals can be improved. Major changes to Symbiota are often made possible by including development support in funding proposals.