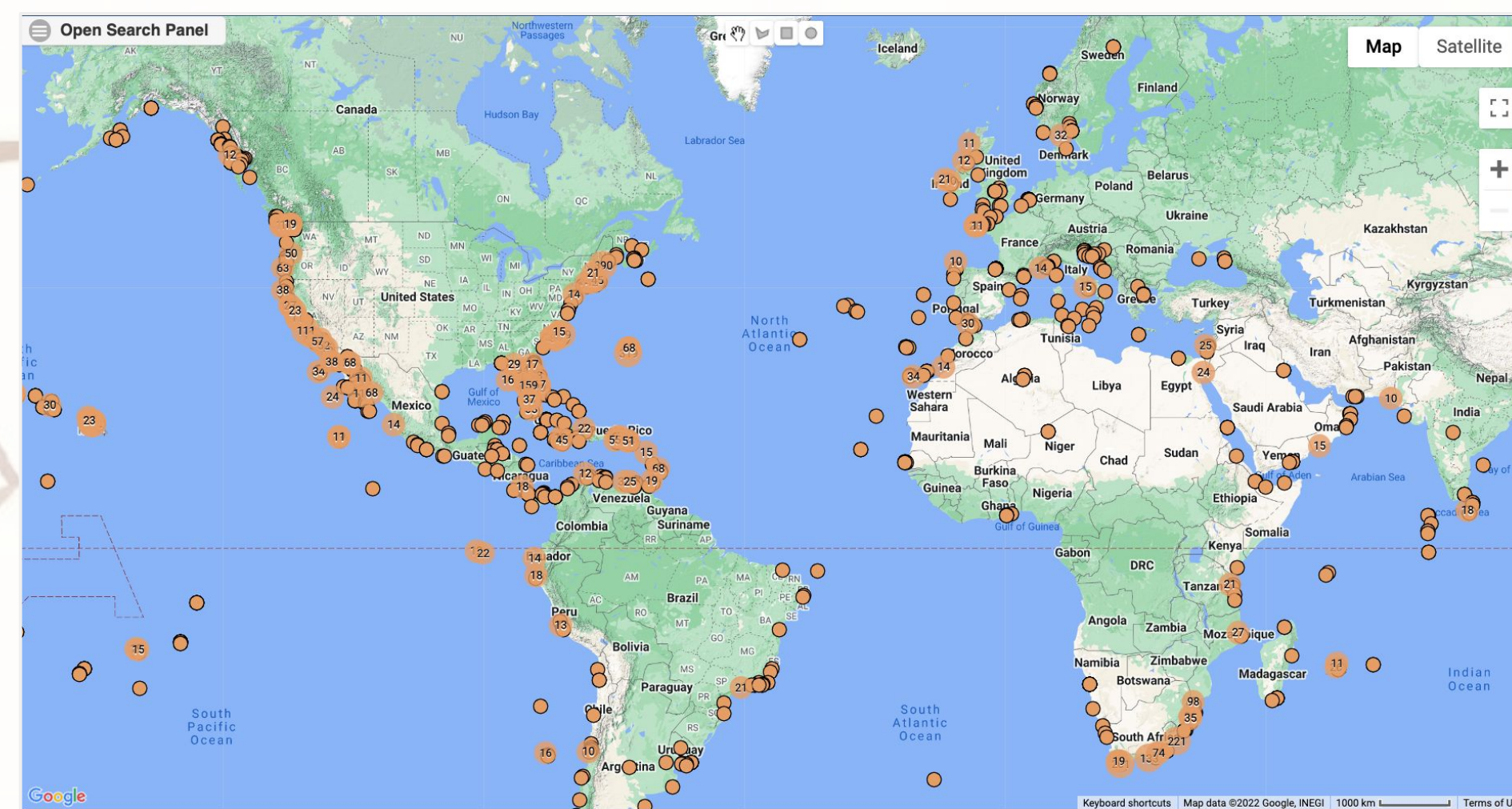


Portal Advancement Campaigns

Macroalgae.org



The Macroalgae Portal aggregates global algal collections. In 2022, this portal was migrated to ASU's servers, enabling full support for this portal by the Symbiota Support Hub.

Contact: Chris Neefus, chris.neefus@unh.edu

Google Group: groups.google.com/g/algae-collections-consortium

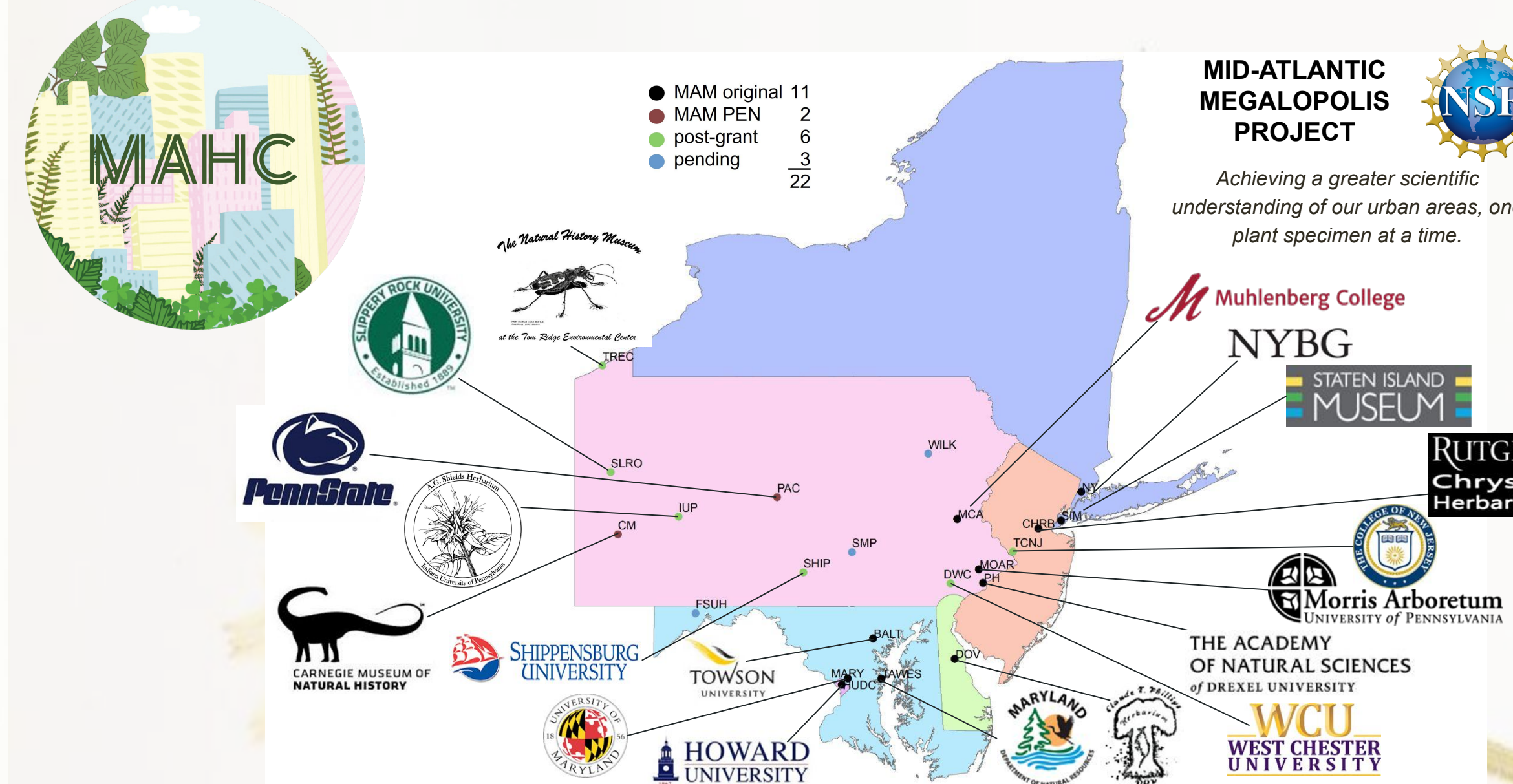
Global Algal Collections

949k
occurrences

61
collections

Photo: NHA-647894 (University of New Hampshire Herbarium)

MidAtlanticHerbaria.org



The MAHC portal was created for the Mid-Atlantic Megalopolis TCN to collaboratively digitize and aggregate occurrences of vascular plants collected in the urban corridor from New York City to Washington, DC.

Contact: Cindy Skema, midatlanticherbaria@gmail.com

Mid-Atlantic U.S. Herbaria (NY, NJ, PA, DE, MD, DC)

20
collections

2.6M+
occurrences

Photo: PH00326242 (Academy of Natural Sciences of Drexel University)

Symbiota Support Hub

More campaigns coming next year!

ASU
Biodiversity
Knowledge
Integration
Center
Arizona State
University

iDigBio
Integrated Digitized Biocollections

UF UNIVERSITY of
FLORIDA

CAL POLY
SAN LUIS OBISPO



iDigBio and the Symbiota Support Hub are made possible by National Science Foundation Award # 2027654. Any opinions, findings, and conclusions or recommendations expressed in this material are those of the authors and do not necessarily reflect the views of the National Science Foundation.

SoRoHerbaria.org

Southern Rocky Mountain Herbaria

5.5M+
occurrences

33
collections

The Consortium of Southern Rocky Mountain Herbaria primarily aggregates herbarium records Colorado, Wyoming, Montana, and Idaho. **Contact:** Ryan Allen, james.r.allen@colorado.edu

Photo: COL008970392 (University of Colorado Herbarium)

MyCoPortal.org

Global Fungal Collections

MYCOLOGY COLLECTIONS PORTAL

MyCoPortal is a large Symbiota portal community that aggregates fungal collections and observations contributed from the global mycological community. **Contact:** help@mycoportal.org



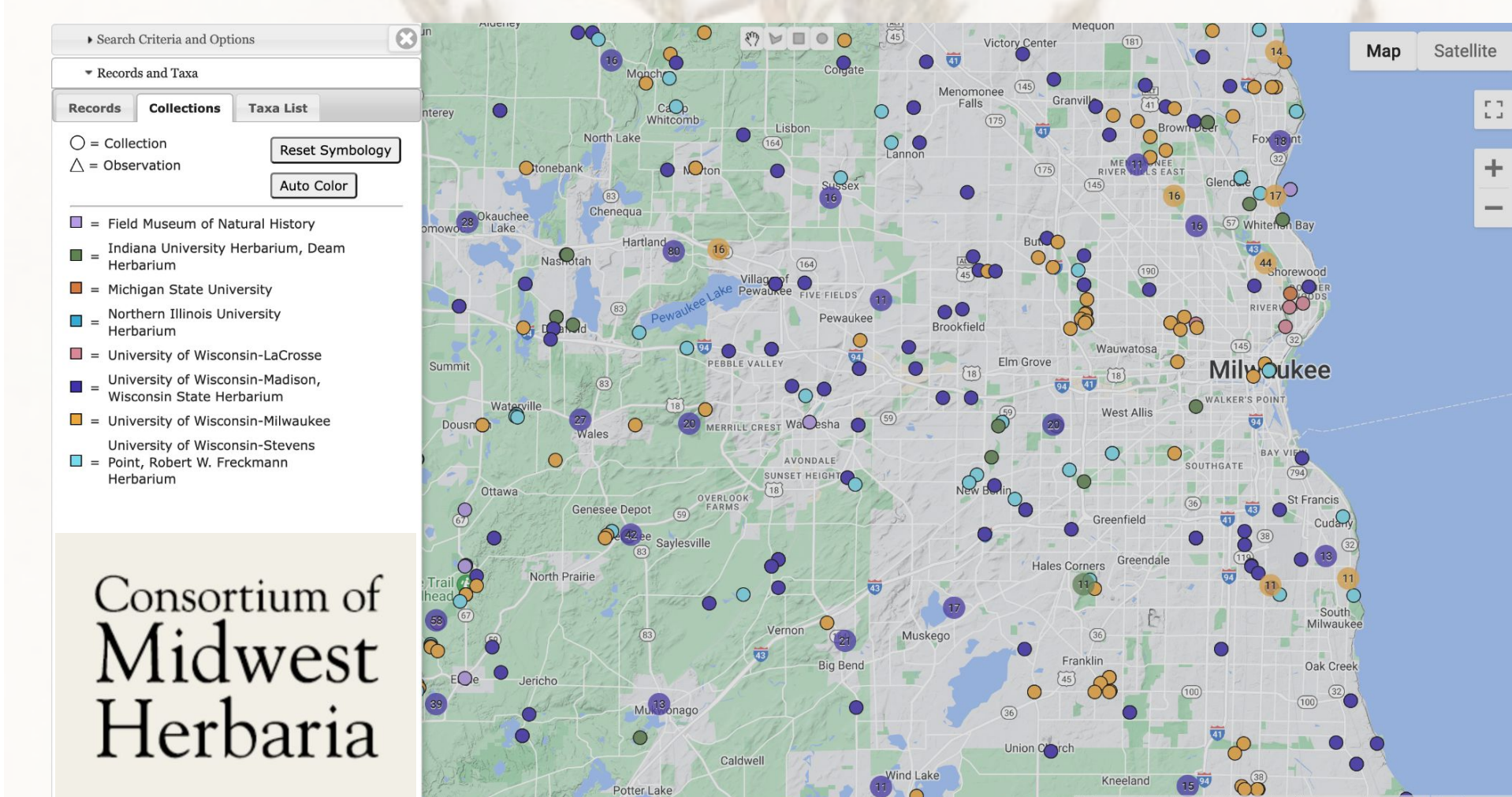
9.7M+
occurrences

153
collections

Photo: MUOB 77682 (Mushroom Observer)

MidwestHerbaria.org

Midwestern U.S. (IL, IN, MI, MN, OH, WI)



3.2M+
occurrences

51
collections

The Consortium of Midwest Herbaria collaboratively digitizes and aggregates occurrences of vascular plants housed in collections from states that border the western Great Lakes. **Google Group:** groups.google.com/g/midwest-herbaria

Photo: MICH1108820 (University of Michigan Herbarium)

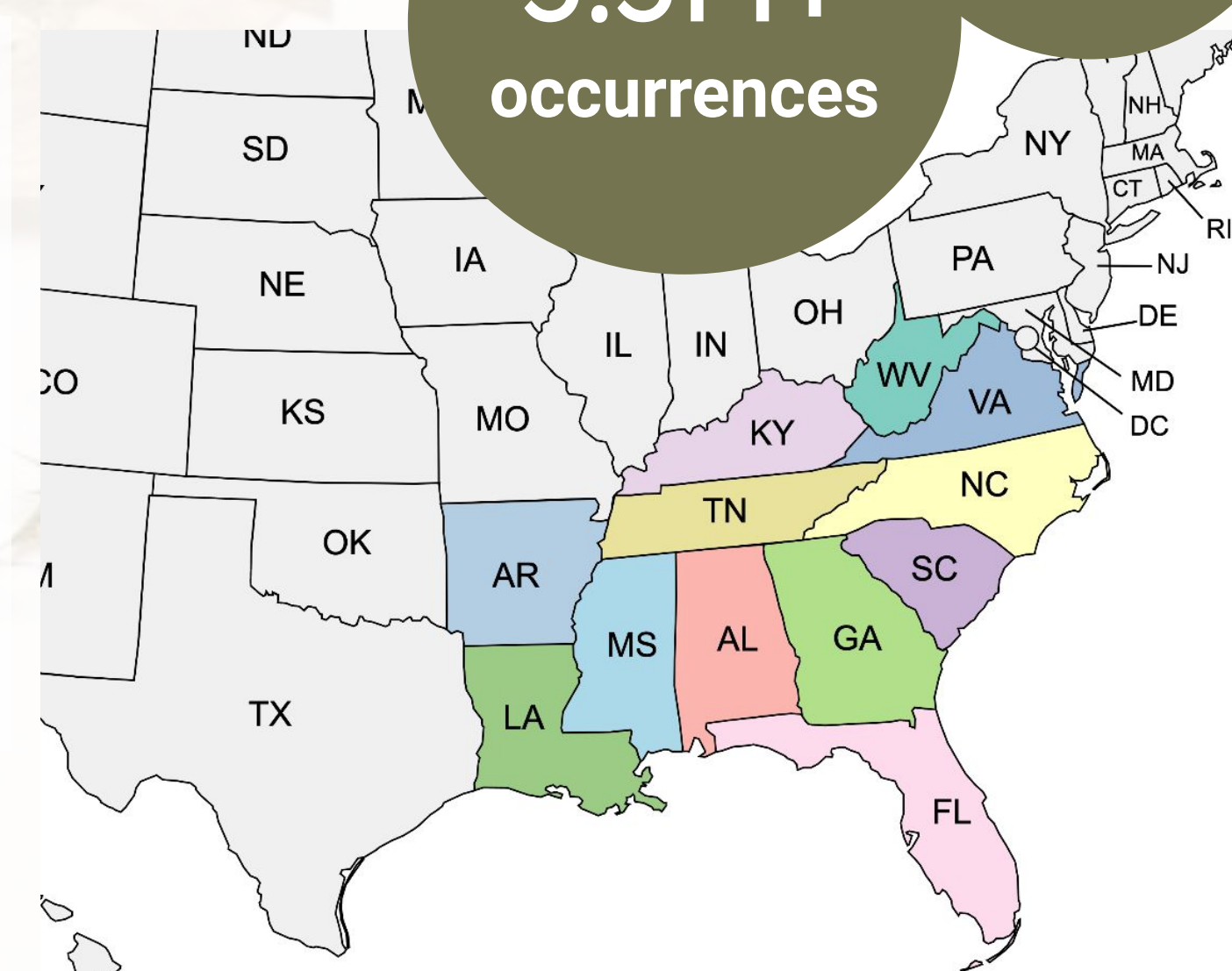
SERNECportal.org

Southeastern U.S. Herbaria

The Southeast Regional Network of Expertise and Collections invites participation from herbaria located in the southeastern United States.

Contacts:

Herrick Brown, herrick.brown@gmail.com (SERNEC mailing list) and Michael Denslow, notesfromnature.pm@gmail.com (Notes from Nature)



5.5M+
occurrences

123
collections



Photo: TROY000042047 (Troy University Herbarium)

TORCHherbaria.org

Texas & Oklahoma Herbaria

The TORCH Data Portal aggregates data from herbaria located in Texas and Oklahoma. Digitization activity is currently supported by the "American Crossroads" TCN (NSF 1902078 and others) led by the Botanical Research Institute of Texas. **Contact:** Diego Barroso, dbarroso@brit.org



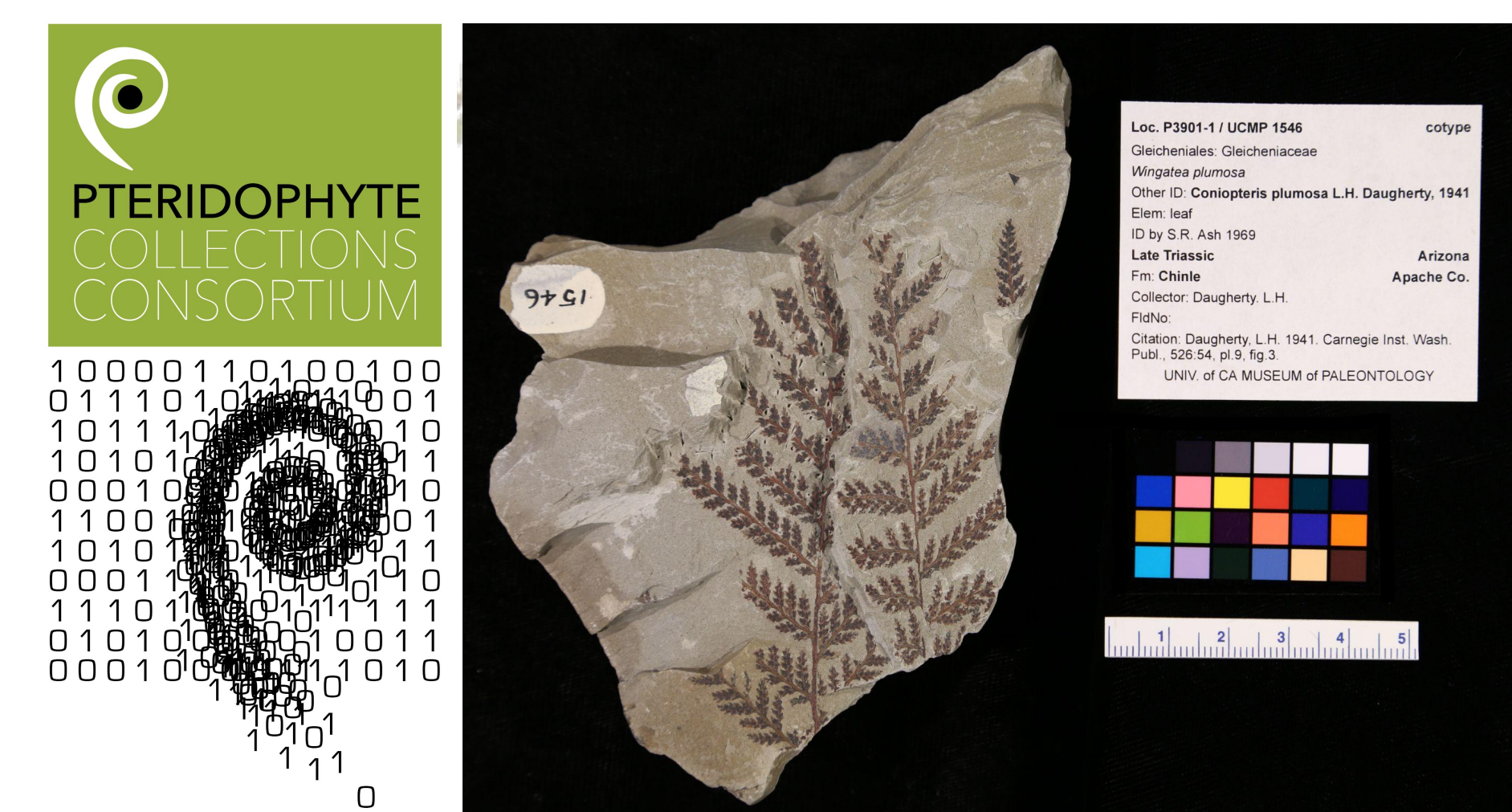
28
collections

2.4M+
occurrences

Photo: TEX00546509 (University of Texas at Austin Herbarium)

Pteridoportal.org

Modern & Fossil Pteridophytes



2.1M+
occurrences

50
collections

The Pteridoportal is the first Symbiota portal to commingle extant and fossil occurrence records. As the portal's taxonomic thesaurus was recently updated to include extinct and extant taxa, portal leadership is seeking taxonomic expertise to help curate this resource. **Contacts:** Carl Rothfels, carl.rothfels@asu.edu and Cindy Looy, looy@berkeley.edu

Photo: ASU0079187 (Arizona State University)